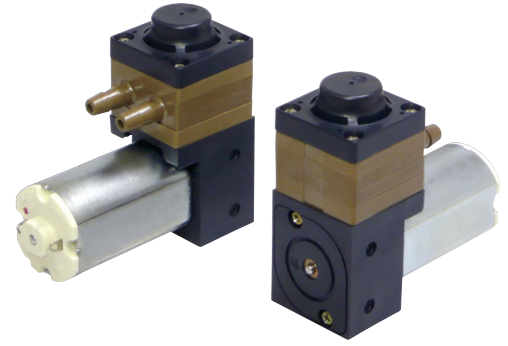


# DC LIQUID PUMP

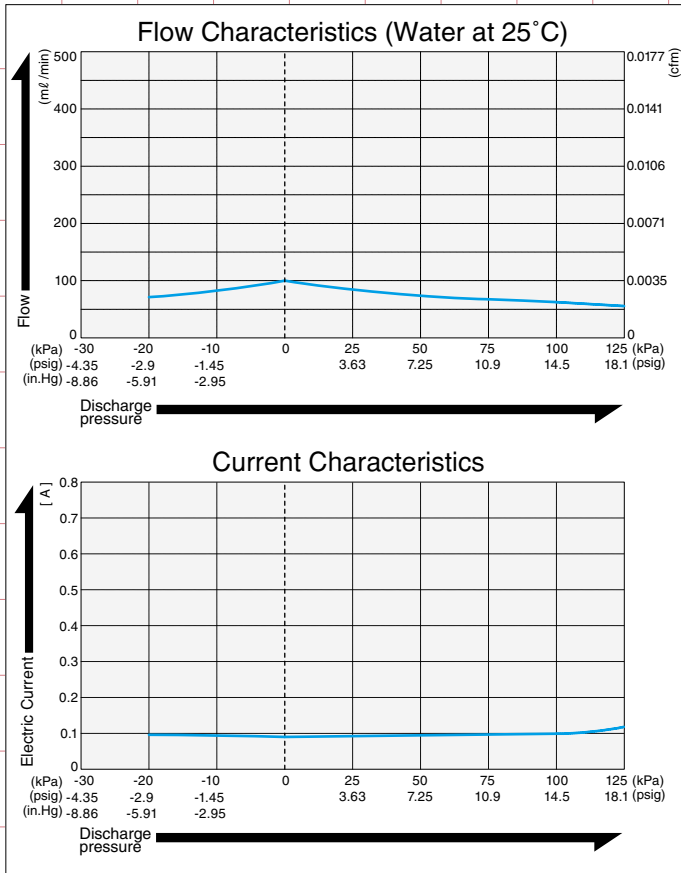
## DIAPHRAGM PUMP



# DPE-100

### Flow & Electric Current

### Specifications



	(SI)	(EURO)	(U.S.A.)
Rated Voltage	24 V DC		
Flow Rate	100 ml /min		0.0035 cfm
Working Pressure Range	0~100 kPa	0~1 bar	0~14.5 psig
Maximum Pressure ※2	300 kPa	3 bar	43.5 psig
Maximum Current	100 mA		
Rated Operating Time	Continuous		
Life Expectancy (MTTF)	500 hours		
Self-priming Pressure ※1	20 kPa		
Inlet & Outlet	4.7 mm O.D. straight nipple		
Insulation Classification	E class equivalent		
Mounting Dimensions	9.5 mm(L) x 17 mm(W)	3/8"(L) x 43/64"(W)	
Gross Weight	67 g		0.148 Lbs.
Motor	DC Brush Motor		

※1: When the check valve is hardened due to low liquid temperature, self-priming performance and flow rate will go down.  
 ※2: Restarting pumps with flow passage closed is impossible.  
 Please read the page of "How to Use This Catalog" first for correct use of compressors and pumps.

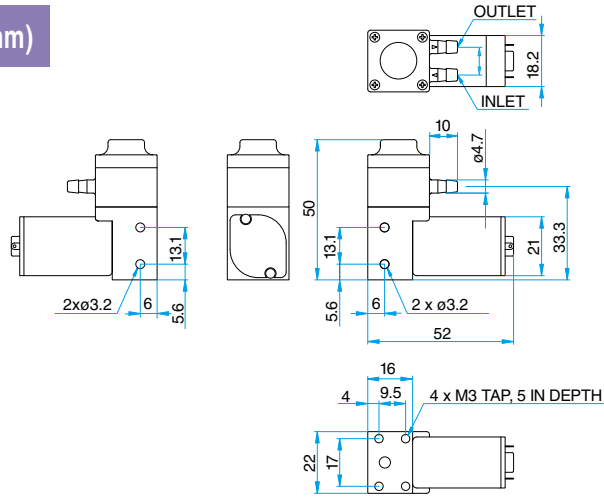
### Build materials and applicable fluids

Model	Cylinder Head	Head Cover	Diaphragm	Valve	O-ring	Applicable fluids
DPE-100-2E	PA Polyamide(Nylon)	PTFE Polytetrafluoroethylene	PTFE Polytetrafluoroethylene	EPDM Ethylene-propylene rubber	FKM Fuluro rubber	Sodium hydroxide, Citric acid Ammonia water, Caustic potash
DPE-100-2G				FFKM Perfluoroelastomer		Ethanol, Ethylene glycol Sodium carbonate, mineral oil
DPE-100-7G	PPS Polyphenylene sulfide	PTFE Polytetrafluoroethylene	PTFE Polytetrafluoroethylene	FKM Fuluro rubber	FKM Fuluro rubber	Xylene, Carbon tetrachloride Trichloroethylene, Silicon oils
DPE-100-7P						FFKM Perfluoroelastomer

### Applications

- Liquid analytical instruments e.g. medical, food, water treatment & environmental.
- Liquid transport within filtration, sampling, sterilizers and washers.
- Ink transport within industrial ink-jet printers.

### Sketch Drawing and Mounting Dimensions Diagram (mm)



# DC LIQUID PUMP

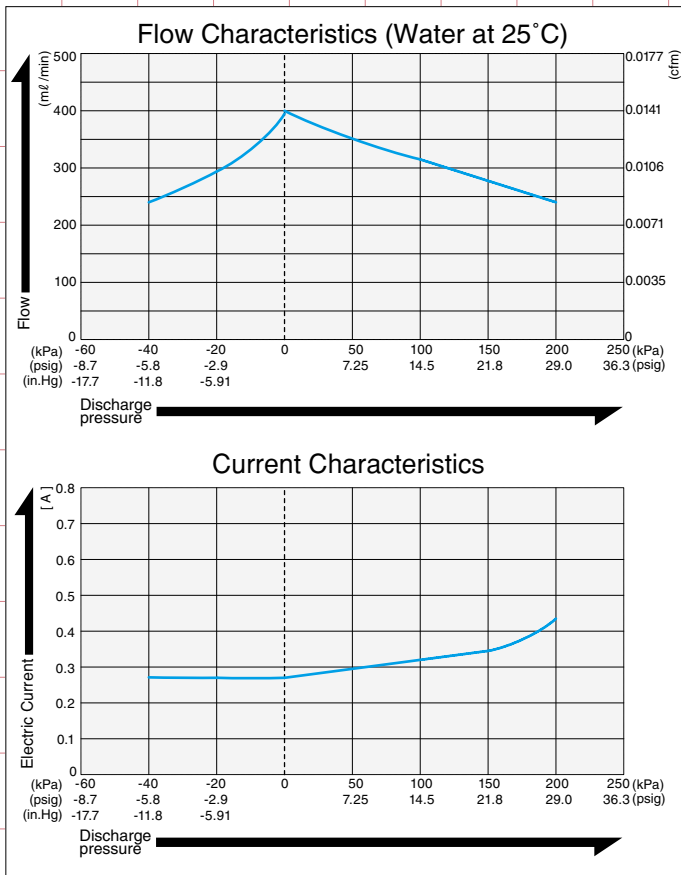
## DPE-400

### DIAPHRAGM PUMP



#### Flow & Electric Current

#### Specifications



	(SI)	(EURO)	(U.S.A.)
Rated Voltage	24 V DC		
Flow Rate	400 ml /min		0.0141 cfm
Working Pressure Range	0~100 kPa	0~1 bar	0~14.5 psig
Maximum Pressure ※2	300 kPa	3 bar	43.5 psig
Maximum Current	345 mA		
Rated Operating Time	Continuous		
Life Expectancy (MTTF)	500 hours		
Self-priming Pressure ※1	40 kPa		
Inlet & Outlet	5.4 mm O.D. straight nipple		
Insulation Classification	F class equivalent		
Mounting Dimensions	19 mm(L) x 26 mm(W)	3/4"(L) x 1-1/32"(W)	
Gross Weight	187 g		0.412 Lbs.
Motor	DC Brush Motor		

※1: When the check valve is hardened due to low liquid temperature, self-priming performance and flow rate will go down.  
 ※2: Restarting pumps with flow passage closed is impossible.  
 Please read the page of "How to Use This Catalog" first for correct use of compressors and pumps.

#### Build materials and applicable fluids

Model	Cylinder Head	Head Cover	Diaphragm	Valve	O-ring	Applicable fluids
DPE-400-2E	PA Polyamide(Nylon)	PTFE Polytetrafluoroethylene	PTFE Polytetrafluoroethylene	EPDM Ethylene-propylene rubber	FFKM Perfluoroelastomer	Sodium hydroxide, Citric acid Ammonia water, Caustic potash
DPE-400-2G				FKM Fuluro rubber		Ethanol, Ethylene glycol Sodium carbonate, mineral oil
DPE-400-7G	PPS Polyphenylene sulfide	PTFE Polytetrafluoroethylene	PTFE Polytetrafluoroethylene	FFKM Perfluoroelastomer	FFKM Perfluoroelastomer	Xylene, Carbon tetrachloride Trichloroethylene, Silicon oils
DPE-400-7P						

#### Applications

- Liquid analytical instruments e.g. medical, food, water treatment & environmental.
- Liquid transport within filtration, sampling, sterilizers and washers.
- Ink transport within industrial ink-jet printers.

#### Sketch Drawing and Mounting Dimensions Diagram (mm)

