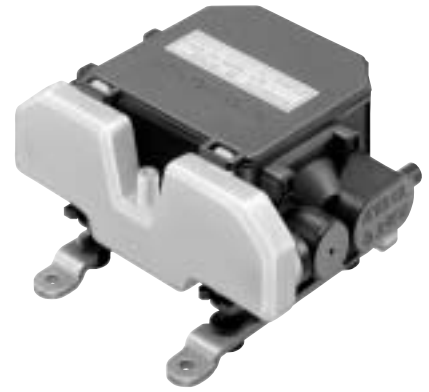


DIAPHRAGM PUMP

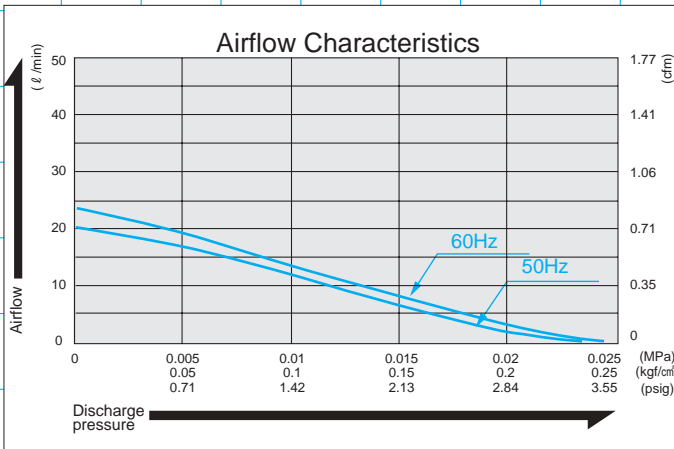
Diaphragm Pump



vc0101

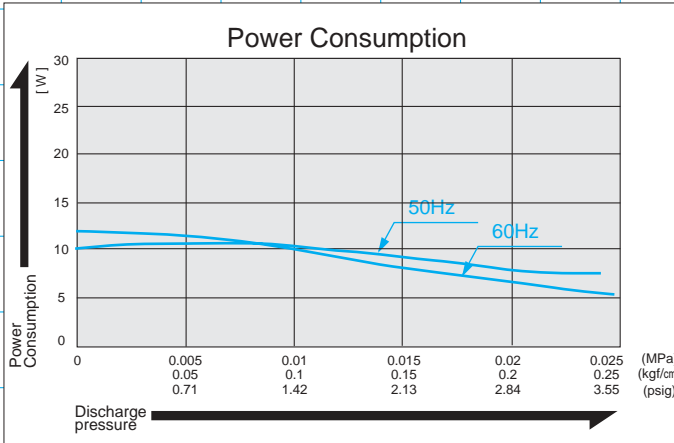
Airflow & Power Consumption

Specifications

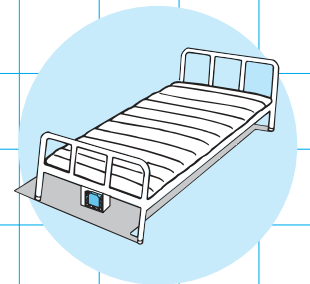
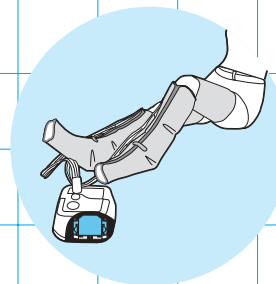


	(SI)	(EURO)	(U.S.A.)
Rated Pressure	0.01 MPa (0.1 kgf/cm ²)	0.1 bar	1.42 psig
Rated Airflow	10 l /min 0.35 cfm		
Rated Voltage	120 V, AC or 230 V, AC		
Maximum Pressure	0.02 MPa (0.2 kgf/cm ²)	0.2 bar	2.84 psig
Power Consumption	11 W		
Rated Frequency	60 Hz or 50 Hz		
Life Expectancy	10,000 hours		
Outlet	7.5 mm O.D. hose nipple		
Duty Cycle	Continuous		
Coil Insulation Class	B for 230V & A for 120V or its equivalent		
Mounting Dimensions	66 (L) x 100 (W) mm		
Gross Weight	0.82 kg		1.8 Lbs.
Leadwire Length	200 mm		7-7/8"

* Life expectancy is the expected accumulated period of time during which the compressor will maintain the above specifications. Contact your supplier for details of the conditions of use under which the values and numbers stated herein are maintained.



Application Examples



Massage Devices

Bed sore Prevention Mattress

Sketch Drawing and Mounting Dimensions Diagram (mm)

